

myEDGE™
NOW/DEC 2009 PARTS AND SERVICE

**HAWKEYE INTERNATIONAL
TRUCKS, INC.**

**COLD CRANKIN'
SAVINGS!**



EXIDE
TECHNOLOGIES

**Performance Edge
Battery**

HP31D

While Supplies Last

\$62⁴⁹

EACH



MILES AHEAD™

US



AeroVantage Wiper Blade

AeroVantage Wiper Blade, 22". All-metal links, bridge and flexors. Premium rubber element for a clear wipe at any speed.
ANC09122



parts & labor
16⁹⁹

6⁹⁹
each



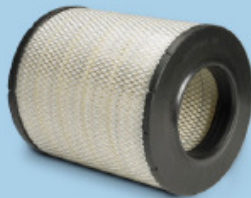
Air Dryer

AD-9® Air Dryer (Reman). Genuine Bendix remanufactured to meet OE specifications.
BX109685X



parts & labor
180⁰⁵

130⁴⁷
w/exch



Air Filter

Magnum RS™ Primary Air Filter. OEM approved. Provides better airflow and greater capacity for longer service intervals.
AF25139M



parts & labor
59⁹⁵

39⁹⁵
each



Alternator

Brush Alternator (New). 22SI HP, 150 amp, hinge mount. The industry's most popular model. Fits essentially all truck applications in North America.
19020310



parts & labor
199⁹⁵

150⁹⁹
each



GET A JUMP ON THIS GREAT DEAL.



Performance Edge Battery HP31D

925 CCA, 160 minute reserve capacity, threaded stud. Stabl-Lok bonding, superior vibration resistance, suitcase handle, waffle bottom.

For more information, check out
hawkeye.virtualpartscounter.com



Heater Kit

Air Top 2000 ST Heater Kit. 12 V, fuel operated cab heater. Heats bunk up to 20 hours on a single gallon of fuel. Reduces idling, saves fuel. WEB5001114A



1296⁴⁰
kit



Fender Kit

Hood and Fender Kit. Packaged set with heavy-duty reinforcement plate on underside. Best looking fender in the industry. ZFA03100402



parts & labor
199⁰³ **145⁹⁹**
kit



Sealed Beam Truck Lamp

Halogen Sealed Beam Truck Lamp. 200 mm, OEM replacement. Replaces 6052, H5054, 6053, GEH6054



parts & labor
35⁶² **5⁶²**
each



Alternator

Brush Alternator (New). 22SI-HP, 150 amp. PAD mount version of the industry's most popular model, 19020310. Broad application range. 19020889



parts & labor
249²⁹ **199⁹⁵**
each



Drive Axle Wheel Seal

Scotseal Plus XL Drive Axle Wheel Seal. CR47692



parts & labor
137⁰⁹ **32⁹⁹**
each



Coolant

50/50 Extended Life Coolant. Provides complete protection of all cooling system components. Over 100 million miles of fleet testing. FELPM7998G



8⁹⁹
each



Seat

Heritage Gold Wide Highback Seat. 22" cushion, two-way lumbar, isolator, attached armrests. Wide comfort and quality at an economic price. Gray velour.
S178814KA25



parts & labor

495⁰⁰

445⁹⁹
each



Spring Brake Piggy Back

Piggyback Plus Brake Kit. Type 30 long stroke spring brake chamber. Includes service diaphragm and service clamp.
ZAJ3230008X



parts & labor

92⁸⁸

52⁸⁸
klt



Shock Absorber

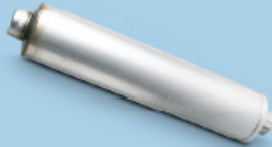
Gas Magnum 65. Gas charged large bore shock absorber. For air spring and taper leaf suspensions.
AMS65109



parts & labor

67⁸⁹

42⁸⁹
each



Vertical Muffler

Economy 5" Vertical Muffler with 5" Inlet, 5" Outlet, 10.1" Body Diameter and 51" Overall Length. Max Flow Rate of 2,850 at 3" Hg.
ZF586682M



parts & labor

156⁸³

56⁹⁵
each



Hood Shield

Chrome ProStar™ Hood Shield. Chromed acrylic hood shield for International
ZED76400003



parts & labor

237⁷⁵

187⁷⁵
each



A/C System

NITE Plus A/C System. Battery operated, no-idle sleeper climate control. Model-specific installation kit sold separately. Battery and box not included.
ZNI733484



2719³⁸
each



Panasonic.

AM/FM CD Player

Heavy-duty AM/FM CD Player. 7-channel weatherband, front-panel input jack, LED lighting, high-power, 148 total watts. CQ51014A

labor starting at **35⁰⁰** **114⁹⁵** each



Fuel Filter

Fuel Filter. User-friendly filter provides superior engine protection. Designed for easy installation and removal. FF42000

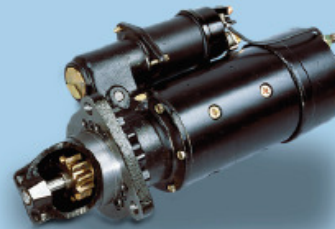
8²⁹ each



Battery

Performance Edge Group 31 Battery. Flooded acid battery, 925 CCA for easy starting, 160 minute reserve capacity for accessory loads. HP310

labor starting at **20⁰⁰** **62⁴⁹** each



Starter

Starter (Reman). 42MT, 12V. The industry's highest volume starter. Broad applications on Cummins and CAT engines. 10461052

parts & labor **319⁹⁵** **214⁹⁵** w/exch